

EURO-V RACK BROCHURE

PELI-HARDIGG™

EURO-V RACK CASES

MEDIUM DUTY

The Euro-V Rack Case is a robust, standard solution designed for fast deployment. It features a steel rack with an industry-standard square hole pattern (M6), supporting metric-mounted equipment. Available in 9 sizes with 610mm and 760mm depths, it delivers dependable shock protection in a lightweight, durable design.

Manufactured in Germany, Euro-V cases offer reduced lead times—ideal for time-sensitive operations without compromising performance.

INDUSTRY-STANDARD
SQUARE HOLE
RACK CASES



SIZES

4U, 5U, 6U, 7U,
8U, 9U and 10U
2" front lid and 5"
back lid standard

PAYLOAD

10 to 80 kg

SWAY SPACE

25 mm

ROLLING FEATURES

All Euro-V cases come standard
with edge casters

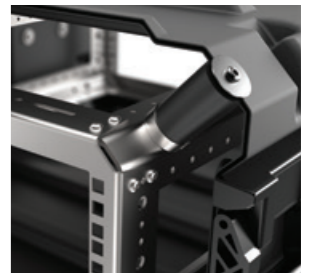


PRE-CONFIGURED FEATURES

- Case Colour: Black
- 8 Black Plastic Handles
- Steel Square Hole Rack Frame
- Pressure Equalisation Device and Closed Loop Gasket
- Lid Hangers and Coupling Catches
- Moulded in Stacking Ribs

SHOCK/VIBRATION SYSTEM

Wall Mounted Cylindrical shocks. Euro-V Rack Cases have a steel square-hole frame using Metric (M6) clip nuts. The shock mounts are attached directly to the case wall.



APPLICATIONS

- Military Rapid Deployment
- Precision Lab and test Equipment
- Aerospace Instrumentation
- Control Consoles/Panels
- Radar/ Microwave Antennas
- Solid State Electronics
- Communications Equipment
- Field-Deployed Applications
- Medical and Biological Diagnostic Devices
- Flight Simulators





STANDARD RACK CASES

4

SPECIFICATIONS

(27.06
‰

HAND LIFT ONLY

HAND LIFT ONLY

RIGHT SIDE

& PRICING



SPECIFICATIONS

	RACK DIMENSIONS							CASE DIMENSIONS											
	RACK HEIGHT U SIZE			RACK DEPTH		RACK WIDTH		FRONT / BACK LID I.D.		OUTSIDE DEPTH		OUTSIDE WIDTH		OUTSIDE HEIGHT		WEIGHT		SHIPPING CUBE	
PART NO.	U	in	mm	in	mm	in	mm	in	mm	in	mm	in	mm	in	mm	lbs	kg	ft³	m³
EURO-V-4U-S	4U	7	178	24	610	19	483	1.9/4.9	49/125	39	992	24.68	627	13.6	345	48.5	22	7.58	0.215
EURO-V-4U-L	4U	7	178	30	762	19	483	1.8/4.6	45/115	45	1138	24.68	627	13.6	345	51.8	23.5	8.74	0.246
EURO-V-5U-L	5U	8.75	222	30	762	19	483	1.8/4.5	45/115	45	1138	24.68	627	15.31	389	52.9	24	9.84	0.278
EURO-V-6U-L	6U	10.5	267	30	762	19	483	1.8/4.5	45/115	45	1138	24.68	627	17.44	433	55.1	25	11.21	0.309
EURO-V-7U-S	7U	12.25	311	24	610	19	483	1.9/4.9	49/125	39	992	24.68	627	18.81	478	55.1	25	10.48	0.297
EURO-V-7U-L	7U	12.25	311	30	762	19	483	1.8/4.5	45/115	45	1138	24.68	627	18.81	478	58.4	26.5	12.09	0.341
EURO-V-8U-L	8U	14	356	30	762	19	483	1.8/4.5	45/115	45	1138	24.68	627	20.55	522	60.6	27.5	13.21	0.372
EURO-V-9U-S	9U	15.75	400	24	610	19	483	1.9/4.9	49/125	39	992	24.68	627	22.32	567	59.5	27	12.43	0.353

The weight data of the cases will be confirmed upon production of initial units.





STANDARD RACK CASES
COMPARISON
TABLE

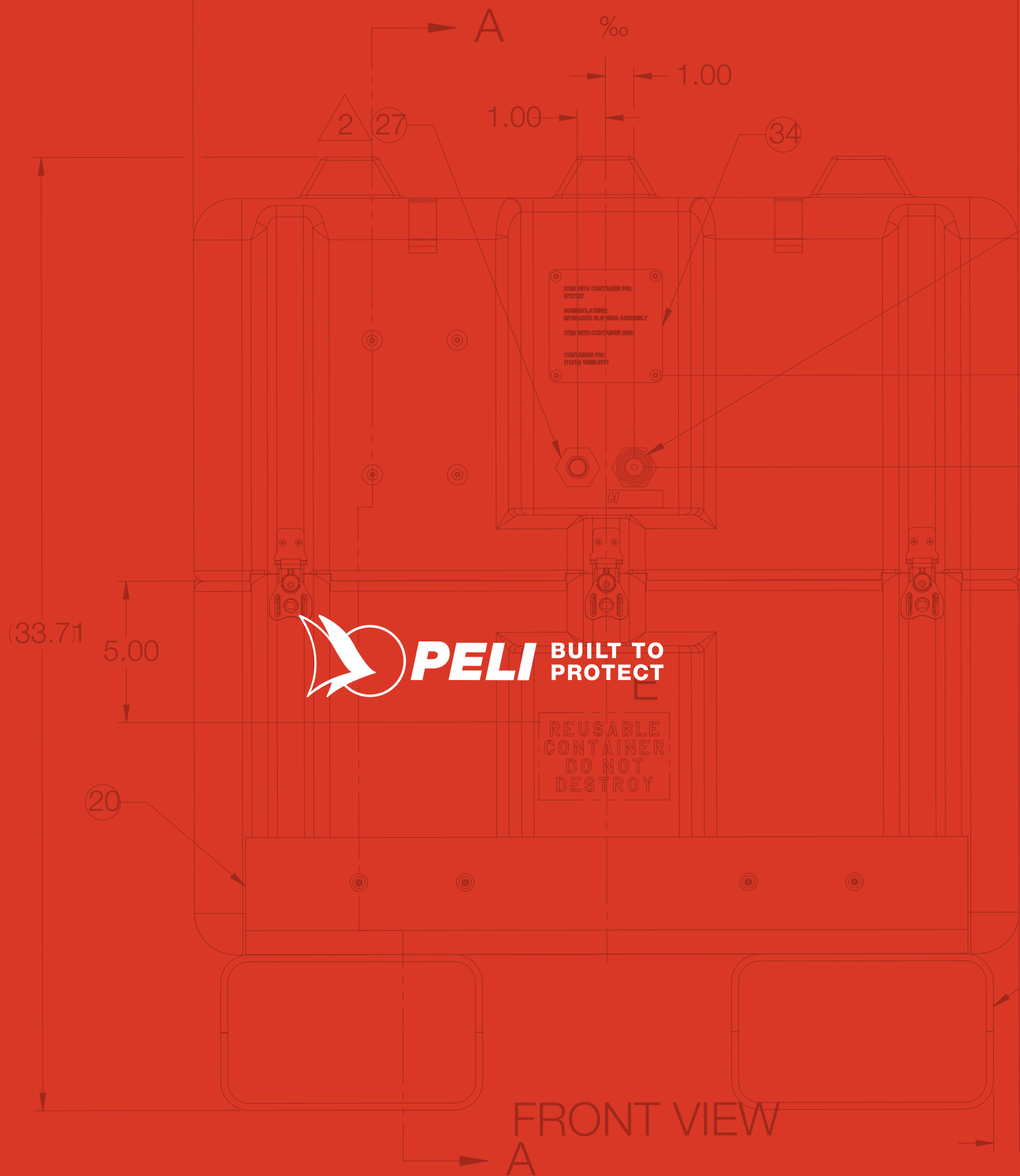
Euro-V Rack Cases feature an interstackable design, making them fully compatible with Super-V and BlackBox rack cases for seamless integration and efficient space utilization.



NEW



	EURO-V RACK CASES (9 Case sizes)	33" CLASSIC-V RACK CASE (5 Case Sizes)	24" AND 30" SUPER-V RACK CASE (7 and 4 Case Sizes)	BLACKBOX CASE (7 Case Sizes)
	25 mm sway space	35 mm sway space	25 mm sway space	25 mm sway space
SWAY SPACE				
FRAME	Steel rack with an industry-standard square hole pattern (M6 Clip nuts available)		Steel rack with an industry-standard square hole pattern (both SAE and M6 clip nuts available)	
CASE SIZES	4U, 5U, 6U, 7U, 8U, 9U, 10U	3U, 4U, 5U, 7U, 9U	3U, 4U, 5U, 7U, 9U, 11U, 14U	3U ,4U, 5U, 7U, 9U, 11U, 14U
RACK DEPTHS	610mm (24") in 4U, 7U and 9U 760mm (30") in 4U, 5U, 6U, 7U, 8U, 10U	84 cm (33")	61 cm (24") in 3U, 4U, 5U, 7U, 9U, 11U, 14U 76.2 cm (30") in 3U, 5U, 7U, 9U	61 cm (24") in 3U, 4U, 5U, 7U, 9U, 11U, 14U 76.2 cm (30") in 3U, 5U, 7U, 9U
PAYLOAD	10 to 80 kg	3U to 5U = 36 - 45 kg. 7U to 9U = 45 - 77 kg.	3U to 5U = 36 - 45 kg. 7U to 14U = 45 - 77 kg.	9 - 45 kg.
G - RATING	15 - 30 G	N/A	15 - 30 G	40 - 80 G
SHOCK PROTECTION	Medium Duty	Medium Duty Better shock and vibration protection (up to 77 kg.)		Light Duty Basic transport and protection from the elements.
SHOCK MOUNTS	Cylindrical shock mounts attached directly to the case wall to isolate equipment from vibration as well as impact forces.	Cylindrical shock mounts attached directly to the case wall to isolate equipment from vibration as well as impact forces.		Cylindrical shock mounts isolate equipment from vibration as well as impact forces.
SHOCK AND VIBRATION PROTECTION	Offers good shock protection in a preconfigured case for made to order purchase of 9 sizes.	Offers good shock protection in a preconfigured case for Off-The-Shelf purchases of 5 sizes.	Offers good shock protection in a preconfigured case for Off-the-Shelf purchase of 7 sizes.	Offers a preconfigured case made of recycled materials in 7 sizes.
USES	Industrial and consumer square hole rack applications. These racks support metric standard mounted equipment.	Industrial and consumer square hole rack applications. These racks support both standard mount equipment (SAE or M6).		Radios and Amplifiers, Solid State Equipment, Field Testing Equipment.
CONFIGURATION	Made to Order	Off-the-Shelf (In stock and ready to ship)	Off-the-Shelf (In stock and ready to ship)	Off-the-Shelf (In stock and ready to ship)



**EMEA HEADQUARTERS
PELI PRODUCTS, S.L.U.**
C/ Provença, 388 Planta 7
08025 Barcelona • Spain
Tel +34 934 674 999

**PELI PRODUCTS
FRANCE S.A.S.**
20/22 Rue des Petits Hôtels
75010 Paris • France
Tel +33 (0)1 44 83 95 63

**PELI PRODUCTS
GERMANY GmbH**
Neudorfer Strasse 285 C
09474 Crottendorf • Germany
Tel +49 (0)37344 313999