



**WATERTIGHT  
PELI PROTECTOR CASES**

CATALOGUE

OCTOBER 2022



SINCE 1976

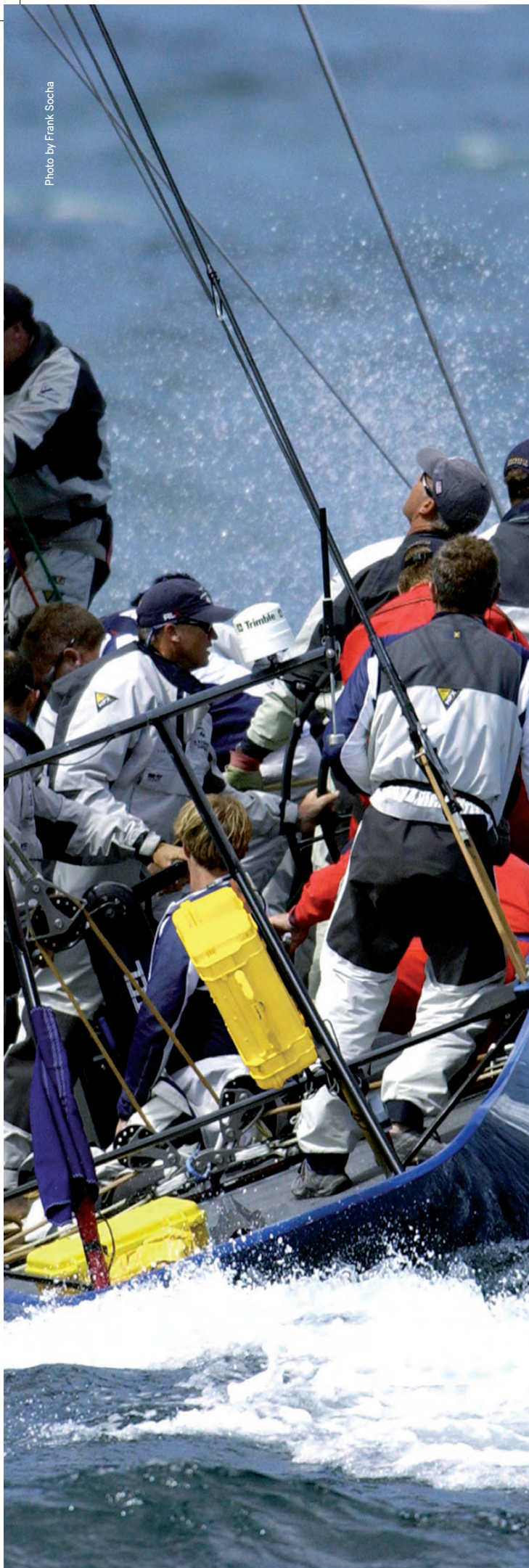


Photo by Pia Berćić



**LIFETIME GUARANTEE\***





# TABLE + OF CONTENTS

<b>PELICAN CASES FEATURES</b>	<b>3</b>
<b>PELICAN CASE INTERIOR PROTECTION</b>	<b>4-5</b>
<b>PELICAN CASES</b>	
Personal Utility Case Series	6
Memory Card & Micro Cases	7-8
Small Cases	9
Laptop & Tablet Cases	10-11
Medium Cases	12-13
Large Cases	14-17
Long Cases	18-19
Cases Specifications	20-23
Case Accessories	22-23





# PELI CASES FEATURES

Rugged, uncompromising and trusted, Peli cases protect what matters to you, from the everyday to the extraordinary. Peli Protector Cases are made with copolymer polypropylene and cutting edge technology, which makes them virtually indestructible and resistant to the most extreme conditions. Proven for over 45 years in the most demanding environments. Engineered and manufactured in the U.S and in Germany. Guaranteed for Life and sustainable due to its long life.

## + STRONGER BY DESIGN

The Peli Protector Case™ uses an open cell core and solid wall construction, which is actually stronger and lighter than a solid core wall. Travel light with heavy protection. And you know it's a Peli™ Case by the distinctive dual band top surface. Stainless steel pins are used for hinges and handles. The Double-Throw latches are smarter and easier to open: it's the classic 'C' clamp design with a secondary movement that works like a pry bar to start the release and offers plenty of leverage to open with a light pull.



## + TESTED

The Peli™ Case design is the result of multiple generations of refinement. This evolution is proven through a battery of rigorous lab tests including drop, vibration, leak, heat and dust tests.



PELI CASES FEATURES

## + EASY RIDING

Stainless steel ball bearing wheels (on selected cases) last longer and ride smoother. The nylon hub adjacent to the stainless steel resists heat. Result: less wear and tear on the polyurethane tire.



- ① NYLON HUB
- ② STAINLESS STEEL BALL BEARING WHEELS
- ③ POLYURETHANE TIRE

## + REINFORCED PADLOCK PROTECTORS

Stainless steel reinforced padlock protectors provide added strength and extra security against cutting and theft.



## + WATERTIGHT

The secret is the tongue and groove fit with a polymer o-ring acting as a waterproof seal.



## + EXTRA PROTECTION



Peli's Pick N Pluck™ foam lets you customise the interior according to your gear. An easy, do-it-yourself system: layers of foam are pre-scored in tiny cubes. Simply measure your equipment over the grid and pluck away.

## + COOL UNDER PRESSURE

The Automatic Pressure Equalisation Valve releases built-up air pressure while keeping water molecules out, resulting in a watertight case that is even easier to open.



LEARN MORE AT [WWW.PELICATALOGUE.COM/EN/PELI-PROTECTOR-CASE](http://WWW.PELICATALOGUE.COM/EN/PELI-PROTECTOR-CASE)

# PELI CASE INTERIOR PROTECTION

Peli™ Cases are available empty or with any of the following protection solutions.

Check how to install all accessories through our easy step-by-step Tutorial videos



## + PICK N PLUCK™ FOAM

An easy, do-it-yourself system for the interior of the case. Layers of foam are pre-scored in 1,27 cm or 2,54 cm cubes. Simply lay your equipment on the foam, tape or chalk to mark the foam, and pluck away. Always allow at least 2,5 cm of foam between your equipment and the case wall.

The following cases ship with solid foam instead of Pick N Pluck™ Foam: 1700, 1720, 1750



## + CUSTOM FOAM SOLUTIONS

Custom foam and extreme solutions such as deck mount suspension systems will keep your delicate items protected on the inside.



## + TREKPAK™ DIVIDERS\*

The TrekPak™ system uses pre-installed wall sections, divider panels, locking pins and an infallible cutting tool. Just lay your gear in the case, measure and cut the divider sections and lock them in place with the steel U-pins.

\* Trekpak™ is available for the following models: 1450, 1500, 1510, 1550, 1560, 1600, 1610, 1650.




## + PANEL FRAMES

Many Peli™ cases can be adapted for use with electronic interface panels by using a Panel Frame. Pre-drilled holes and stainless steel screws make fabricating a custom case a fast and accurate proposition.



A polymer o-ring seals the panel so the base of the case remains watertight, even with the lid open.

The following cases are adaptable for use with panel frames: 1120, 1150, 1200, 1300, 1400, 1430, 1450, 1470, 1490, 1500, 1520, 1550 (search for the icon )



- O-ring
- Panel Frame
- Attachment Hardware

See how to mount a panel frame here:





## + LID ORGANISERS

Made of simulated leather or ballistic nylon with nylon zippers. A wide variety of pocket sizes protect and keep your gear organised. They install easily with Velcro® strips (included).



LID ORGANISER OPTIONS				
CASE	MESH	COMPUTER	PHOTO	EMS
	1430			1439 Photo <sup>A</sup>
1440	1449 Mesh <sup>A</sup>			
1490		1498 Computer <sup>B</sup>		
1495		1495 Computer <sup>B</sup>		
1500	1509 Mesh		1508 Photo	1505 EMS <sup>B</sup>
1510	1519 Mesh <sup>A</sup>			
1520	1509 Mesh		1508 Photo <sup>B</sup>	
1550				1555 EMS <sup>B</sup>
1560	1569 Mesh			
1600	1609 Mesh <sup>B</sup>			1605 EMS <sup>A</sup>
1610	1609 Mesh <sup>B</sup>			
1620	1609 Mesh <sup>B</sup>			
1630	1639 Mesh <sup>A</sup>			
1640	0379 Mesh <sup>A</sup>			
1650	1659 Mesh <sup>A</sup>			
1660	1669 Mesh <sup>A</sup>			
1690	1699 Mesh <sup>A</sup>			
0340	0349 Mesh <sup>A</sup>			
0350	0359 Mesh <sup>A</sup>			
0370	0379 Mesh <sup>A</sup>			

A= With mounting screws B= With mounting Velcro®

## + EZ-CLICK™ MOLLE PANEL

The first lid organiser of its kind that can quickly be released and swapped out without tools. Engineered to fit in the 1510 and 1560 Pelican cases, the panel is compatible with user-supplied MOLLE pouches and Velcro™ brand straps.



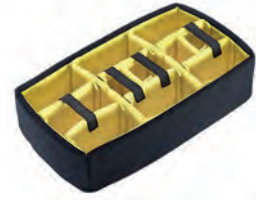
## + ELECTRONIC INSTALLATIONS



Pelican Case allows customisation for electronics. The copolymer material can be machined, drilled and sanded smooth. This makes the Pelican Case suitable for use with bulkhead connectors.

## + PADDED DIVIDERS

An alternative to Pelican™ foam is our optional Padded Divider Sets. The compartments are connected with Velcro® so you can easily change the configuration according to your needs.



PADDED DIVIDER OPTIONS			
CASE	LAYERS	CASE WITH DIVIDERS (CAT. NO.)	DIVIDER SET ONLY (CAT. NO.)
1450	1	1454	1455
1500	1	1504*	1505*
1510	1	1514*	1515*
1520	1	1524	1525
1550	1	1554*	1555*
1560	1	1564*	1565*
1600	1	1604	1605
1610	1	1614	1615
1620	2	1624	1625
1630	2	1634	1635
1640	2	1644	1645
1650	1	1654*	1655*
1660	2	1664	1665
1690	2	1694	1695
0340	2	0344	0345
0350	2	0354	0355
0370	2	0374	0375



\* These cases/sets come with new high-visibility yellow dividers. All others with standard black dividers.

## + HYBRID PROTECTION

No longer choose between the versatility of the TrekPak™ divider system or the protection of the manually customisable Pick N Pluck™ foam. Pelican™ Hybrid protection features both. Only available for the Pelican™ 1510 case as a standard offering.



## + WE CUSTOMISE YOUR LOGO

Personalise your case with your company logo or have your name engraved on the nameplate. Logos can be applied in multiple colours as a Mylar® decal or as a vibrant fade-resistant, scratch-resistant hot-stamped ink.



CASE CONTENTS NOT INCLUDED



# PERSONAL UTILITY CASE SERIES

## OUTSIDE

- Ip68 rated protection from water, dirt, snow and dust
- Rubber exo-skeleton
- Dual pivot latch
- Multiple external attachment points

## INSIDE

- Snap in, flexible lid organizer
- Loop system with velcro® brand straps
- Cable routing hole
- Rigid divider tray



PELI PERSONAL UTILITY CASE SERIES

### R20

**INTERNAL DIMS:**  
18 x 8.6 x 5 cm  
(7.07" x 3.39" x 1.95")

**EXTERNAL DIMS:**  
22.8 x 12.3 x 7.3 cm  
(8.96" x 4.83" x 2.88")

**LID/BOTTOM DEPTH:**  
N/A

**WEIGHT:**  
0.6 kg (1.26 lbs)



### R40

**INTERNAL DIMS:**  
19.4 x 11.9 x 4.8 cm  
(7.63" x 4.70" x 1.90")

**EXTERNAL DIMS:**  
25 x 15.5 x 7.3 cm  
(9.84" x 6.12" x 2.89")

**LID/BOTTOM DEPTH:**  
N/A

**WEIGHT:**  
0.8 kg (1.68 lbs)



### R60

**INTERNAL DIMS:**  
22.6 x 13.6 x 7.5 cm  
(8.90" x 5.37" x 2.96")

**EXTERNAL DIMS:**  
28.3 x 17.4 x 9.9 cm  
(11.14" x 6.86" x 3.88")

**LID/BOTTOM DEPTH:**  
N/A

**WEIGHT:**  
1.1 kg (2.34 lbs)



**IP68**

**WATERPROOF,**  
SUBMERSION  
DEPTH OF  
**2 METERS** FOR  
**30 MINUTES**

CASE CONTENTS NOT INCLUDED



# MEMORY CARD & MICRO CASES

From small sensitive components to smartphones, protect your gear from the elements in a Memory Card Case or Micro Case from Peli™.



PELI MEMORY CARD AND MICRO CASES

## 0915 CASE

**INTERNAL DIMS:**  
12.2 x 5.7 x 1.4 cm  
(4.79" x 2.25" x 0.55")

**EXTERNAL DIMS:**  
14.1 x 8.3 x 2.2 cm  
(5.55" x 3.27" x 0.85")

**LID/BOTTOM DEPTH:**  
N/A

**WEIGHT:**  
0.1 kg (0.22 lbs) WITH LINER



Stores 12 SD cards, 6 mini SD cards and 6 micro SD cards (not included)

## RFID PROTECTED

Blocks personal data theft and keeps cards safe.



## 0965 CASE

**INTERNAL DIMS:**  
12.2 x 5.7 x 1.4 cm  
(4.79" x 2.25" x 0.55")

**EXTERNAL DIMS:**  
14.1 x 8.3 x 2.2 cm  
(5.55" x 3.27" x 0.85")

**LID/BOTTOM DEPTH:**  
N/A

**WEIGHT:**  
0.1 kg (0.22 lbs)



Stores XQD and CFexpress cards (not included)

## G5 RF FIELD WALLET

**INTERNAL DIMS:**  
1.1 x 6.5 x 10.4 cm  
(0.43" x 2.56" x 4.10")

**EXTERNAL DIMS:**  
2 x 7.6 x 12.7 cm  
(0.80" x 3.00" x 5.00")

**LID/BOTTOM DEPTH:**  
N/A

**WEIGHT:**  
0.1 kg (0.33 lbs)



CASE CONTENTS NOT INCLUDED





### 1010 MICRO CASE

**INTERNAL DIMS:**  
11.1 x 7.3 x 4.3 cm  
(4.37" x 2.87" x 1.68")

**EXTERNAL DIMS:**  
14.9 x 10.3 x 5.4 cm  
(5.88" x 4.06" x 2.12")

**LID/BOTTOM DEPTH:**  
1.8 cm / 2.4 cm  
(0.69" / 0.94")

**WEIGHT:**  
0.19 kg (0.41 lbs.) WITH FOAM  
0.18 kg (0.4 lbs) NO FOAM



### 1015 MICRO CASE

**INTERNAL DIMS:**  
13.1 x 6.7 x 3.5 cm  
(5.14" x 2.64" x 1.37")

**EXTERNAL DIMS:**  
17 x 9.9 x 4.7 cm  
(6.68" x 3.88" x 1.86")

**LID/BOTTOM DEPTH:**  
1.1 cm / 2.4 cm  
(0.43" / 0.94")

**WEIGHT:**  
0.21 kg (0.46 lbs)



### 1020 MICRO CASE

**INTERNAL DIMS:**  
13.5 x 9 x 4.3 cm  
(5.31" x 3.56" x 1.68")

**EXTERNAL DIMS:**  
17.3 x 12.1 x 5.4 cm  
(6.82" x 4.75" x 2.12")

**LID/BOTTOM DEPTH:**  
1.8 cm / 2.4 cm (0.69" / 0.94")

**WEIGHT:**  
0.25 kg (0.56 lbs) WITH FOAM  
0.25 kg (0.55 lbs) NO FOAM



### 1030 MICRO CASE

**INTERNAL DIMS:**  
16.2 x 6.7 x 5.2 cm  
(6.37" x 2.62" x 2.06")

**EXTERNAL DIMS:**  
19.1 x 9.8 x 6.2 cm  
(7.5" x 3.87" x 2.43")

**LID/BOTTOM DEPTH:**  
1.8 cm / 3.2 cm  
(0.69" / 1.25")

**WEIGHT:**  
0.28 kg (0.61 lbs) WITH FOAM  
0.27 kg (0.6 lbs) NO FOAM



### 1040 MICRO CASE

**INTERNAL DIMS:**  
16.5 x 9.8 x 4.4 cm  
(6.5" x 3.87" x 1.75")

**EXTERNAL DIMS:**  
19.1 x 12.9 x 5.4 cm  
(7.5" x 5.06" x 2.12")

**LID/BOTTOM DEPTH:**  
1.8 cm / 2.4 cm  
(0.69" / 0.94")

**WEIGHT:**  
0.32 kg (0.71 lbs) WITH FOAM  
0.32 kg (0.7 lbs) NO FOAM



### 1050 MICRO CASE

**INTERNAL DIMS:**  
16 x 9.3 x 7 cm  
(6.31" x 3.68" x 2.75")

**EXTERNAL DIMS:**  
20.3 x 12.9 x 7.9 cm  
(7.99" x 5.06" x 3.12")

**LID/BOTTOM DEPTH:**  
1.8 cm / 4.9 cm  
(0.69" / 1.94")

**WEIGHT:**  
0.38 kg (0.83 lbs) WITH FOAM  
0.37 kg (0.81 lbs) NO FOAM



### 1060 MICRO CASE

**INTERNAL DIMS:**  
21 x 10.8 x 5.7 cm  
(8.25" x 4.25" x 2.25")

**EXTERNAL DIMS:**  
25.1 x 14.2 x 6.7 cm  
(9.88" x 5.59" x 2.63")

**LID/BOTTOM DEPTH:**  
1.8 cm / 3.7 cm  
(0.69" / 1.44")

**WEIGHT:**  
0.47 kg (1.03 lbs) WITH FOAM  
0.45 kg (1 lbs) NO FOAM



\*Other colours and configurations available upon minimum quantities. Check with your Customer Service representative for further details.

CASE CONTENTS NOT INCLUDED



# SMALL CASES

Lightweight, but extremely strong; compact, yet fully capable. Perfect for valuable gear like hand tools and small to medium electronic components, hand held GPS systems, and DSLR cameras. All small cases are available empty or with pre-scored Pick N Pluck™ foam.



## 1120 CASE

**INTERNAL DIMS:**  
18.5 x 12.1 x 8.5 cm  
(7.29" x 4.78" x 3.33")

**EXTERNAL DIMS:**  
21.4 x 17.2 x 9.8 cm  
(8.41" x 6.76" x 3.87")

**LID/BOTTOM DEPTH:**  
1.3 cm / 6.5 cm (0.5" / 2.56")

**WEIGHT:**  
0.65 kg (1.43 lbs) WITH FOAM  
0.61 kg (1.34 lbs) NO FOAM



## 1150 CASE

**INTERNAL DIMS:**  
21.1 x 14.7 x 9.5 cm  
(8.29" x 5.79" x 3.75")

**EXTERNAL DIMS:**  
24 x 19.8 x 10.9 cm  
(9.44" x 7.8" x 4.29")

**LID/BOTTOM DEPTH:**  
1.9 cm / 7.3 cm (0.75" / 2.87")

**WEIGHT:**  
0.79 kg (1.75 lbs) WITH FOAM  
0.73 kg (1.61 lbs) NO FOAM



## 1170 CASE

**INTERNAL DIMS:**  
26.8 x 15.3 x 8 cm  
(10.54" x 6.04" x 3.16")

**EXTERNAL DIMS:**  
29.6 x 21.2 x 9.6 cm  
(11.64" x 8.34" x 3.78")

**LID/BOTTOM DEPTH:**  
2.7 cm / 5.3 cm  
(1.08" / 2.08")

**WEIGHT:**  
0.95 kg (2.1 lbs) WITH FOAM  
0.89 kg (1.96 lbs) NO FOAM



## 1200 CASE

**INTERNAL DIMS:**  
23.5 x 18.1 x 10.5 cm  
(9.25" x 7.12" x 4.12")

**EXTERNAL DIMS:**  
27 x 24.6 x 12.4 cm  
(10.62" x 9.68" x 4.87")

**LID/BOTTOM DEPTH:**  
3 cm / 7.4 cm (1.18" / 2.93")

**WEIGHT:**  
1.3 kg (2.87 lbs) WITH FOAM  
1.2 kg (2.65 lbs) NO FOAM



## 1300 CASE

**INTERNAL DIMS:**  
23.3 x 17.8 x 15.5 cm  
(9.17" x 7" x 6.12")

**EXTERNAL DIMS:**  
27 x 24.6 x 17.4 cm  
(10.62" x 9.68" x 6.87")

**LID/BOTTOM DEPTH:**  
3 cm / 12.5 cm (1.18" / 4.93")

**WEIGHT:**  
1.6 kg (3.53 lbs) WITH FOAM  
1.4 kg (3.09 lbs) NO FOAM



## 1400 CASE

**INTERNAL DIMS:**  
30.1 x 22.8 x 13.1 cm  
(11.87" x 8.97" x 5.15")

**EXTERNAL DIMS:**  
34.7 x 29.5 x 14.6 cm  
(13.68" x 11.61" x 5.75")

**LID/BOTTOM DEPTH:**  
3 cm / 10.2 cm (1.18" / 4")

**WEIGHT:**  
2 kg (4.41 lbs) WITH FOAM  
1.8 kg (3.97 lbs) NO FOAM



Adaptable for use with panel frame

CASE CONTENTS NOT INCLUDED

\*Other colours and configurations available upon minimum quantities. Check with your Customer Service representative for further details.



# LAPTOP & TABLET CASES

The Peli line of tablet and laptop cases feature revolutionary design, construction and durability. Peli HardBack™ cases are available in many sizes and insert options. Moulded plush shock absorbing liner protects from impact and won't scratch your device— superior protection for your office on the go!



PELI LAPTOP & TABLET CASES

## 1075 HARDBACK™ CASE

**INTERNAL DIMS:**

28.2 x 20.1 x 4.1 cm  
(11.11" x 7.92" x 1.63")

**EXTERNAL DIMS:**

31.4 x 24.8 x 5.4 cm  
(12.38" x 9.75" x 2.13")

**LID/BOTTOM DEPTH:**

2.1 cm (0.81")

**WEIGHT:**

0.7 kg (1.54 lbs) WITH FOAM  
0.6 kg (1.41 lbs) NO FOAM



## 1085 HARDBACK™ CASE

**INTERNAL DIMS:**

36.3 x 26.3 x 5 cm  
(14.29" x 10.37" x 1.97")

**EXTERNAL DIMS:**

39.7 x 31.5 x 6.4 cm  
(15.64" x 12.41" x 2.5")

**LID/BOTTOM DEPTH:**

2.5 cm (0.99")

**WEIGHT:**

1.4 kg (3.1 lbs) WITH FOAM  
1.2 kg (2.65 lbs) NO FOAM



## 1095 HARDBACK™ CASE

**INTERNAL DIMS:**

40.1 x 28.3 x 5.2 cm  
(15.78" x 11.16" x 2.06")

**EXTERNAL DIMS:**

43.6 x 33.6 x 6.6 cm  
(17.18" x 13.24" x 2.6")

**LID/BOTTOM DEPTH:**

2.6 cm (1.03")

**WEIGHT:**

1.6 kg (3.49 lbs) WITH FOAM  
1.4 kg (3.05 lbs) NO FOAM



## 1095CC HARDBACK™ CASE

**INTERNAL DIMS:**

40.1 x 28.3 x 5.2 cm  
(15.78" x 11.16" x 2.06")

**EXTERNAL DIMS:**

43.6 x 33.6 x 6.6 cm  
(17.18" x 13.24" x 2.6")

**LID/BOTTOM DEPTH:**

2.6 cm (1.03")

**WEIGHT:**

1.5 kg (3.29 lbs) WITH FOAM



Adaptable for use with panel frame

CASE CONTENTS NOT INCLUDED



### 1470 CASE

**INTERNAL DIMS:**  
39.9 x 27.2 x 9.8 cm  
(15.7" x 10.7" x 3.87")

**EXTERNAL DIMS:**  
42.9 x 33.6 x 11.4 cm  
(16.88" x 13.23" x 4.47")

**LID/BOTTOM DEPTH:**  
3.7 cm / 6.1 cm (1.47" / 2.4")

**WEIGHT:**  
2.5 kg (5.51 lbs) WITH FOAM  
1.94 kg (4.28 lbs) NO FOAM



### 1490 CASE

**INTERNAL DIMS:**  
45.1 x 28.9 x 10.5 cm  
(17.75" x 11.37" x 4.12")

**EXTERNAL DIMS:**  
50.5 x 35.4 x 11.9 cm  
(19.87" x 13.93" x 4.68")

**LID/BOTTOM DEPTH:**  
3.8 cm / 6.7 cm (1.5" / 2.62")

**WEIGHT:**  
2.95 kg (6.5 lbs) WITH FOAM  
2.48 kg (5.47 lbs) NO FOAM



### 1490CC1 CASE

**INTERNAL DIMS:**  
45.1 x 28.9 x 10.5 cm  
(17.75" x 11.37" x 4.12")

**EXTERNAL DIMS:**  
50.5 x 35.4 x 11.9 cm  
(19.87" x 13.93" x 4.68")

**LID/BOTTOM DEPTH:**  
3.8 cm / 6.7 cm (1.5" / 2.62")

**WEIGHT:**  
2.95 kg (6.5 lbs) WITH FOAM  
2.48 kg (5.47 lbs) NO FOAM



### 1495 CASE

**INTERNAL DIMS:**  
47.9 x 33.3 x 9.7 cm  
(18.87" x 13.12" x 3.81")

**EXTERNAL DIMS:**  
54.9 x 43.8 x 12.4 cm  
(21.62" x 17.25" x 4.87")

**LID/BOTTOM DEPTH:**  
2.8 cm / 6.8 cm (1.12" / 2.68")

**WEIGHT:**  
3.8 kg (8.37 lbs) WITH FOAM  
3.28 kg (7.23 lbs) NO FOAM



### 1495CC1 CASE

**INTERNAL DIMS:**  
47.9 x 33.3 x 9.7 cm  
(18.87" x 13.12" x 3.81")

**EXTERNAL DIMS:**  
54.9 x 43.8 x 12.4 cm  
(21.62" x 17.25" x 4.87")

**LID/BOTTOM DEPTH:**  
2.8 cm / 6.8 cm (1.12" / 2.68")

**WEIGHT:**  
5.03 kg (11.1 lbs)



### 1430 TOP LOADER CASE

**INTERNAL DIMS:**  
34.4 x 14.6 x 29.7 cm  
(13.56" x 5.76" x 11.7")

**EXTERNAL DIMS:**  
41.7 x 22.1 x 33.4 cm  
(16.4" x 8.71" x 13.15")

**LID/BOTTOM DEPTH:**  
5.1 cm / 24.6 cm (2" / 9.7")

**WEIGHT:**  
2.95 kg (6.5 lbs) WITH FOAM  
2.54 kg (5.6 lbs) NO FOAM



### 1440 TOP LOADER CASE

**INTERNAL DIMS:**  
43.4 x 19.1 x 40.6 cm  
(17.1" x 7.5" x 16")

**EXTERNAL DIMS:**  
50 x 30.5 x 45.7 cm  
(19.7" x 12" x 18")

**LID/BOTTOM DEPTH:**  
5.1 cm / 35.6 cm (2" / 14")

**WEIGHT:**  
7.48 kg (16.5 lbs) WITH FOAM  
6.58 kg (14.5 lbs) NO FOAM



PELI LAPTOP & TABLET CASES

Adaptable for use with panel frame

CASE CONTENTS NOT INCLUDED

\*Other colours and configurations available upon minimum quantities. Check with your Customer Service representative for further details.



# MEDIUM CASES

Mobility with room for protecting larger gear or multiple instruments and accessories. Interior options are available for extra protection. Selected models meet carry-on luggage specifications. \* Most cases are available empty, with foam or padded dividers. See chart on page 20.

## 1450 CASE Similarly sized Peli Storm Case: iM2200

**INTERNAL DIMS:**  
37.4 x 26 x 15.4 cm  
(14.72" x 10.22" x 6.08")

**EXTERNAL DIMS:**  
40.9 x 33.1 x 17.5 cm  
(16.1" x 13.03" x 6.88")

**LID/BOTTOM DEPTH:**  
4.4 cm / 11.1 cm (1.75" / 4.37")

**WEIGHT:**  
2.9 kg (6.39 lbs) WITH FOAM  
2.5 kg (5.51 lbs) NO FOAM



Look for this icon for wheels on selected models.

\*Check with your airline for exact measurement requirements

PELI MEDIUM CASES

## 1460 CASE

**INTERNAL DIMS:**  
47.1 x 25.2 x 27.7 cm  
(18.54" x 9.92" x 10.92")

**EXTERNAL DIMS:**  
53 x 32.3 x 32.4 cm  
(20.85" x 12.73" x 12.75")

**LID/BOTTOM DEPTH:**  
12.5 cm / 15.3 cm (4.91" / 6.01")

**WEIGHT:**  
5.66 kg (12.48 lbs) WITH FOAM  
3.97 kg (8.75 lbs) NO FOAM



## 1460 TOOL CASE

**INTERNAL DIMS:**  
47.1 x 25.2 x 27.7 cm  
(18.54" x 9.92" x 10.92")

**EXTERNAL DIMS:**  
53 x 32.3 x 32.4 cm  
(20.85" x 12.73" x 12.75")

**LID/BOTTOM DEPTH:**  
12.5 cm / 15.3 cm  
(4.91" / 6.01")

**WEIGHT:**  
5.9 kg (13 lbs) WITH TRAY ASSEMBLY



## 1460 EMS CASE

**INTERNAL DIMS:**  
47.1 x 25.2 x 27.7 cm  
(18.54" x 9.92" x 10.92")

**EXTERNAL DIMS:**  
53 x 32.3 x 32.4 cm  
(20.85" x 12.73" x 12.75")

**LID/BOTTOM DEPTH:**  
12.5 cm / 15.3 cm (4.91" / 6.01")

**WEIGHT:**  
8.26 kg (18.2 lbs)  
WITH TRAY ASSEMBLY



## 1500 CASE Similarly sized Peli Storm Case: iM2300

**INTERNAL DIMS:**  
42.8 x 28.6 x 15.5 cm  
(16.84" x 11.27" x 6.09")

**EXTERNAL DIMS:**  
47.1 x 35.7 x 17.5 cm  
(18.54" x 14.05" x 6.89")

**LID/BOTTOM DEPTH:**  
4.6 cm / 10.9 cm (1.81" / 4.31")

**WEIGHT:**  
3.2 kg (7.05 lbs) WITH FOAM  
2.9 kg (6.39 lbs) NO FOAM



✓ Adaptable for use with panel frame

\*Other colours and configurations available upon minimum quantities. Check with your Customer Service representative for further details.

CASE CONTENTS NOT INCLUDED



### 1510 CASE Similarly sized Peli Storm Case: iM2500

**INTERNAL DIMS:**  
50.1 x 27.9 x 19.3 cm  
(19.75" x 11" x 7.6")

**EXTERNAL DIMS:**  
55.9 x 35.1 x 22.9 cm  
(22" x 13.81" x 9")

**LID/BOTTOM DEPTH:**  
4.5 cm / 14.7 cm (1.79" / 5.79")

**WEIGHT:**  
6.17 kg (13.6 lbs) WITH FOAM  
5.44 kg (11.99 lbs) NO FOAM



### 1510M CASE

**INTERNAL DIMS:**  
50.2 x 27.9 x 19.3 cm  
(19.75" x 11" x 7.6")

**EXTERNAL DIMS:**  
59.8 x 36.5 x 27 cm  
(23.55" x 14.36" x 10.62")

**LID/BOTTOM DEPTH:**  
4.5 cm / 14.7 cm (1.79" / 5.79")

**WEIGHT:**  
8.1 kg (17.91 lbs) WITH FOAM  
7.4 kg (16.3 lbs) NO FOAM



### 1510TPF HYBRID CASE Similarly sized Peli Storm Case: iM2500

**INTERNAL DIMS:**  
50.1 x 27.9 x 19.3 cm  
(19.75" x 11" x 7.6")

**EXTERNAL DIMS:**  
55.9 x 35.1 x 22.9 cm  
(22" x 13.81" x 9")

**LID/BOTTOM DEPTH:**  
4.5 cm / 14.7 cm (1.79" / 5.79")

**WEIGHT:**  
6.77 kg (14.94 lbs)



### 1510 LOC CASE Similarly sized Peli Storm Case: iM2500

**INTERNAL DIMS:**  
50.2 x 27.9 x 19.3 cm  
(19.75" x 11" x 7.6")

**EXTERNAL DIMS:**  
55.9 x 35.1 x 22.9 cm  
(22" x 13.81" x 9")

**LID/BOTTOM DEPTH:**  
4.5 cm / 14.7 cm (1.79" / 5.79")

**WEIGHT:**  
6.2 kg (13.6 lbs) WITH FOAM  
5.4 kg (11.99 lbs) NO FOAM



### 1510 SC CASE

**INTERNAL DIMS:**  
50.2 x 27.9 x 19.3 cm  
(19.75" x 11" x 7.6")

**EXTERNAL DIMS:**  
55.9 x 35.1 x 22.9 cm  
(22" x 13.81" x 9")

**LID/BOTTOM DEPTH:**  
4.5 cm / 14.7 cm (1.79" / 5.79")

**WEIGHT:**  
6.2 kg (13.6 lbs) WITH FOAM  
5.4 kg (11.99 lbs) NO FOAM



### 1510 LFC CASE

**INTERNAL DIMS:**  
50.2 x 27.9 x 19.3 cm  
(19.75" x 11" x 7.6")

**EXTERNAL DIMS:**  
55.9 x 35.1 x 22.9 cm  
(22" x 13.81" x 9")

**LID/BOTTOM DEPTH:**  
4.5 cm / 14.7 cm  
(1.79" / 5.79")

**WEIGHT:**  
6.2 kg (13.6 lbs) WITH FOAM  
5.4 kg (11.99 lbs) NO FOAM



### 1520 CASE Similarly sized Peli Storm Case: iM2400

**INTERNAL DIMS:**  
44.9 x 31.8 x 17.1 cm  
(17.68" x 12.53" x 6.73")

**EXTERNAL DIMS:**  
49.9 x 39.3 x 19.1 cm  
(19.65" x 15.49" x 7.53")

**LID/BOTTOM DEPTH:**  
4.5 cm / 12.5 cm (1.79" / 4.93")

**WEIGHT:**  
4.24 kg (9.35 lbs) WITH FOAM  
3.76 kg (8.29 lbs) NO FOAM



### 1550 CASE Similarly sized Peli Storm Case: iM2600

**INTERNAL DIMS:**  
47.3 x 36 x 19.6 cm  
(18.63" x 14.18" x 7.71")

**EXTERNAL DIMS:**  
52.5 x 43.5 x 21.6 cm  
(20.66" x 17.12" x 8.51")

**LID/BOTTOM DEPTH:**  
4.4 cm / 14.9 cm (1.75" / 5.87")

**WEIGHT:**  
5.4 kg (11.9 lbs) WITH FOAM  
4.8 kg (10.58 lbs) NO FOAM



Adaptable for use with panel frame

CASE CONTENTS NOT INCLUDED

\*Other colours and configurations available upon minimum quantities. Check with your Customer Service representative for further details.



# LARGE CASES

Designed for extreme protection during transport and storage. Customisable interiors allow for extra protection and inventory control. Selected models feature retractable handles, extra wide grips and sturdy casters for efficient mobility. See chart on page 22.



PELI LARGE CASES

SDMG®

## 1560 CASE

### INTERNAL DIMS:

50.6 x 38 x 22.9 cm  
(19.92" x 14.98" x 9")

### EXTERNAL DIMS:

56 x 45.5 x 26.5 cm  
(22.07" x 17.92" x 10.42")

### LID/BOTTOM DEPTH:

5.1 cm / 17.8 cm (2" / 7")

### WEIGHT:

9.07 kg (20 lbs) WITH FOAM  
7.71 kg (17 lbs) NO FOAM



## 1560M CASE

### INTERNAL DIMS:

50.6 x 38 x 22.9 cm  
(19.92" x 14.98" x 9")

### EXTERNAL DIMS:

60.4 x 46.6 x 30.7 cm  
(23.78" x 18.33" x 12.08")

### LID/BOTTOM DEPTH:

5.1 cm / 17.8 cm (2" / 7")

### WEIGHT:

11 KG (24.3 LBS) WITH FOAM  
9.7 KG (21.3 LBS) NO FOAM



## 1560LOC CASE

### INTERNAL DIMS:

50.6 x 38 x 22.9 cm  
(19.92" x 14.98" x 9")

### EXTERNAL DIMS:

56.1 x 45.5 x 26.5 cm  
(22.07" x 17.92" x 10.42")

### LID/BOTTOM DEPTH:

5.1 cm / 17.8 cm (2" / 7")

### WEIGHT:

8.2 kg (18.18 lbs) WITH FOAM  
7.7 kg (17 lbs) NO FOAM



## 1560SC CASE

### INTERNAL DIMS:

50.6 x 38 x 22.9 cm  
(19.92" x 14.98" x 9")

### EXTERNAL DIMS:

56.1 x 45.5 x 26.5 cm  
(22.07" x 17.92" x 10.42")

### LID/BOTTOM DEPTH:

5.1 cm / 17.8 cm (2" / 7")

### WEIGHT:

8.2 kg (18.18 lbs) WITH FOAM  
7.7 kg (17 lbs) NO FOAM



\*Other colours and configurations available upon minimum quantities. Check with your Customer Service representative for further details.

CASE CONTENTS NOT INCLUDED



### 1560LFC CASE

**INTERNAL DIMS:**  
50.6 x 38 x 22.9 cm  
(19.92" x 14.98" x 9")

**EXTERNAL DIMS:**  
56.1 x 45.5 x 26.5 cm  
(22.07" x 17.92" x 10.42")

**LID/BOTTOM DEPTH:**  
5.1 cm / 17.8 cm (2" / 7")

**WEIGHT:**  
8.2 kg (18.18 lbs) WITH FOAM  
7.7 kg (17 lbs) NO FOAM



### 1600 CASE

Similarly sized Peli Storm Case: iM2700

**INTERNAL DIMS:**  
54.6 x 42 x 20.2 cm  
(21.51" x 16.54" x 7.95")

**EXTERNAL DIMS:**  
61.8 x 49.4 x 22.2 cm  
(24.35" x 19.46" x 8.75")

**LID/BOTTOM DEPTH:**  
4.4 cm / 15.5 cm  
(1.75" / 6.12")

**WEIGHT:**  
6.4 kg (14.11 lbs) WITH FOAM  
5.9 kg (13 lbs) NO FOAM



### 1610 CASE

Similarly sized Peli Storm Case: iM2720

**INTERNAL DIMS:**  
55.1 x 42.2 x 26.8 cm  
(21.68" x 16.62" x 10.56")

**EXTERNAL DIMS:**  
62.8 x 49.7 x 30.3 cm  
(24.71" x 19.58" x 11.93")

**LID/BOTTOM DEPTH:**  
5.2 cm / 21.6 cm (2.06" / 8.5")

**WEIGHT:**  
10.2 kg (22.49 lbs) WITH FOAM  
9.1 kg (20 lbs) NO FOAM



### 1610M CASE

**INTERNAL DIMS:**  
55.3 x 42.4 x 27 cm  
(21.78" x 16.69" x 10.62")

**EXTERNAL DIMS:**  
66.5 x 58.4 x 34.7 cm  
(26.2" x 23" x 13.68")

**LID/BOTTOM DEPTH:**  
5.2 cm / 21.8 cm (2.05" / 8.57")

**WEIGHT:**  
13.2 kg (29.1 lbs) WITH FOAM  
11.9 kg (26.3 lbs) NO FOAM



### 1620 CASE

Similarly sized Peli Storm Case: iM2750

**INTERNAL DIMS:**  
54.3 x 41.4 x 31.9 cm  
(21.37" x 16.31" x 12.56")

**EXTERNAL DIMS:**  
63 x 49.2 x 35.2 cm  
(24.81" x 19.37" x 13.87")

**LID/BOTTOM DEPTH:**  
5.2 cm / 26.7 cm (2.06" / 10.5")

**WEIGHT:**  
11.8 kg (26.01 lbs) WITH FOAM  
11.1 kg (24.47 lbs) NO FOAM



### 1620M CASE

**INTERNAL DIMS:**  
54.6 x 41.7 x 31.9 cm  
(21.48" x 16.42" x 12.54")

**EXTERNAL DIMS:**  
66.5 x 58.4 x 39.6 cm  
(26.2" x 23" x 15.61")

**LID/BOTTOM DEPTH:**  
5.1 cm / 26.7 cm  
(2.01" / 10.53")

**WEIGHT:**  
14.3 kg (31.42 lbs) WITH FOAM  
12.7 kg (28 lbs) NO FOAM



PELLI LARGE CASES



## INTACT AFTER MASSIVE EXPLOSION

My team and I were first responders to a terrorist attack on a hotel in Islamabad, Pakistan. As part of our recovery effort at the blast site, we 'repatriated' one of our armored vehicles. Inside the vehicle, which was in the immediate impact zone of the SVBIED, we discovered an unscathed 'Model 1640 Peli Transport Case™.' The case stood up against a massive explosion and flying shrapnel. Seeing how well this product withstood this type of abuse, I can say that you have found yourself several new lifetime customers!

US Federal Agent

SURVIVAL  
+ STORIES

CASE CONTENTS NOT INCLUDED

\*Other colours and configurations available upon minimum quantities. Check with your Customer Service representative for further details.

For the most up-to-date information, please visit [www.peli.com](http://www.peli.com) or [www.pelicatalogue.com](http://www.pelicatalogue.com)

PELLI CASES CATALOGUE | 15



## SUPERSTORM PROOF

The plane hit with such force that it sheared the left wing and float right off and, as the plane rapidly sunk, everyone was able to escape out the exits. For over nine hours, the plane was submerged some 6-8 feet under water, loosely held to the right pontoon! When we were finally allowed to recover our gear, I was planning for the worst, because the water damage on impact had destroyed just about everyone's gear. But when I opened the lid on my Peli™ 1650 case, I was astonished to find that there was very little water inside and everything was intact!

Tim Cothren, wildlife photographer



PELI LARGE CASES

### 1630 CASE

**INTERNAL DIMS:**  
70.4 x 53.3 x 39.4 cm  
(27.7" x 20.98" x 15.5")

**EXTERNAL DIMS:**  
79.5 x 61.5 x 44.4 cm  
(31.28" x 24.21" x 17.48")

**LID/BOTTOM DEPTH:**  
8.3 cm / 30.8 cm (3.25" / 12.14")

**WEIGHT:**  
16.33 kg (36 lbs) WITH FOAM  
14.06 kg (31 lbs) NO FOAM



### 1640 CASE

**INTERNAL DIMS:**  
60.2 x 61 x 35.3 cm  
(23.7" x 24" x 13.9")

**EXTERNAL DIMS:**  
69.1 x 69.9 x 41.4 cm  
(27.2" x 27.5" x 16.3")

**LID/BOTTOM DEPTH:**  
5.1 cm / 30.2 cm (2" / 11.9")

**WEIGHT:**  
17.24 kg (38 lbs) WITH FOAM  
15.42 kg (34 lbs) NO FOAM



### 1650 CASE Similarly sized Peli Storm Case: iM2950

**INTERNAL DIMS:**  
72.2 x 44.2 x 27 cm  
(28.41" x 17.4" x 10.64")

**EXTERNAL DIMS:**  
80.1 x 52.1 x 31.7 cm  
(31.55" x 20.51" x 12.47")

**LID/BOTTOM DEPTH:**  
4.6 cm / 22.5 cm  
(1.81" / 8.84")

**WEIGHT:**  
12.73 kg (28.06 lbs) WITH FOAM  
10.9 kg (24.03 lbs) NO FOAM



### 1660 CASE

**INTERNAL DIMS:**  
71.6 x 50.2 x 44.8 cm  
(28.18" x 19.75" x 17.62")

**EXTERNAL DIMS:**  
80 x 58.1 x 48.3 cm  
(31.5" x 22.87" x 19")

**LID/BOTTOM DEPTH:**  
8.9 cm / 35.9 cm  
(3.5" / 14.12")

**WEIGHT:**  
19.1 kg (42.11 lbs) WITH FOAM  
15.5 kg (34.17 lbs) NO FOAM



### 1670 CASE

**INTERNAL DIMS:**  
71.4 x 41.9 x 23.3 cm  
(28.1" x 16.49" x 9.19")

**EXTERNAL DIMS:**  
78.8 x 49.3 x 28.4 cm  
(31.04" x 19.39" x 11.17")

**LID/BOTTOM DEPTH:**  
4.6 cm / 18.8 cm (1.8" / 7.39")

**WEIGHT:**  
11.8 kg (26 lbs) WITH FOAM  
10.4 kg (23 lbs) NO FOAM



### 1690 CASE

**INTERNAL DIMS:**  
76.5 x 63.8 x 39 cm  
(30.13" x 25.13" x 15.36")

**EXTERNAL DIMS:**  
84.9 x 72.1 x 44.8 cm  
(33.43" x 28.4" x 17.65")

**LID/BOTTOM DEPTH:**  
7.3 cm / 30.8 cm (2.86" / 12.14")

**WEIGHT:**  
19.5 kg (43 lbs) WITH FOAM  
15.42 kg (34 lbs) NO FOAM



\*Other colours and configurations available upon minimum quantities. Check with your Customer Service representative for further details.

CASE CONTENTS NOT INCLUDED



### 1730 CASE

**INTERNAL DIMS:**  
86.4 x 61 x 31.8 cm  
(34" x 24" x 12.5")

**EXTERNAL DIMS:**  
95.3 x 68.9 x 36.5 cm  
(37.5" x 27.13" x 14.37")

**LID/BOTTOM DEPTH:**  
6.4 cm / 25.4 cm (2.5" / 1")

**WEIGHT:**  
17.24 kg (38 lbs) WITH FOAM  
13.61 kg (30 lbs) NO FOAM



### 1780 CASE

**INTERNAL DIMS:**  
104.4 x 54.7 x 37.8 cm  
(41.12" x 21.54" x 14.88")

**EXTERNAL DIMS:**  
114 x 64.3 x 41.9 cm  
(44.9" x 25.32" x 16.5")

**LID/BOTTOM DEPTH:**  
19.3 cm / 18.5 cm (7.58" / 7.3")

**WEIGHT:**  
22.2 kg (49 lbs) WITH FOAM  
17.4 kg (38.4 lbs) NO FOAM



### 0340 CASE

**INTERNAL DIMS:**  
45.7 x 45.7 x 45.7 cm  
(18" x 18" x 18")

**EXTERNAL DIMS:**  
52.1 x 52.1 x 48.9 cm  
(20.5" x 20.5" x 19.25")

**LID/BOTTOM DEPTH:**  
11.4 cm / 34.3 cm (4.5" / 13.5")

**WEIGHT:**  
13.5 kg (29.76 lbs) WITH FOAM  
10.89 kg (24 lbs) NO FOAM



### 0350 CASE

**INTERNAL DIMS:**  
50.8 x 50.8 x 50.8 cm  
(2" x 2" x 2")

**EXTERNAL DIMS:**  
57.2 x 57 x 54 cm  
(22.5" x 22.43" x 21.25")

**LID/BOTTOM DEPTH:**  
12.7 cm / 38.1 cm (5" / 15")

**WEIGHT:**  
14.52 kg (32.01 lbs) WITH FOAM  
11.79 kg (25.99 lbs) NO FOAM



### 0370 CASE

**INTERNAL DIMS:**  
61 x 61 x 61 cm  
(24" x 24" x 24")

**EXTERNAL DIMS:**  
67.3 x 67.3 x 64.1 cm  
(26.5" x 26.5" x 25.25")

**LID/BOTTOM DEPTH:**  
12.7 cm / 48.3 cm  
(5" / 19")

**WEIGHT:**  
18.6 kg (41 lbs) WITH FOAM  
14.5 kg (31.97 lbs) NO FOAM



### 0450 CASE

**INTERNAL DIMS:**  
Varies by drawer configuration

**EXTERNAL DIMS:**  
60.8 x 37.5 x 45.6 cm  
(23.95" x 14.75" x 17.95")

**LID/BOTTOM DEPTH:**  
N/A

**WEIGHT:**  
21.95 kg (48.4 lbs)



### 0500 CASE

**INTERNAL DIMS:**  
88.8 x 46.9 x 64.1 cm  
(34.95" x 18.45" x 25.25")

**EXTERNAL DIMS:**  
101.5 x 59.6 x 72.8 cm  
(39.95" x 23.45" x 28.65")

**LID/BOTTOM DEPTH:**  
5.7 cm / 58.4 cm  
(2.25" / 23")

**WEIGHT:**  
26.58 kg (58.6 lbs) WITH FOAM  
22.68 kg (50 lbs) NO FOAM



### 0550 CASE

**INTERNAL DIMS:**  
120.8 x 61.1 x 44.9 cm  
(47.57" x 24.07" x 17.68")

**EXTERNAL DIMS:**  
129.7 x 70 x 57.9 cm  
(51.05" x 27.54" x 22.79")

**LID/BOTTOM DEPTH:**  
8.1 cm / 36.8 cm  
(3.19" / 14.49")

**WEIGHT:**  
43.09 kg (95 lbs) WITH FOAM  
35.92 kg (79.2 lbs) NO FOAM



shown with optional  
caster wheels



PELI LARGE CASES

CASE CONTENTS NOT INCLUDED

\*Other colours and configurations available upon minimum quantities. Check with your Customer Service representative for further details.



# LONG CASES

Ideal for weapons, but are also used by industrial workers for instruments and gear. Equipped with sturdy polyurethane wheels for ease of transport. See chart on page 22.

PELI LONG CASES



All Long Cases are equipped with wheels

Photo by Instinct Tactique



### 1700 CASE

Similarly sized Peli Storm Case: iM3100

**INTERNAL DIMS:**

90.8 x 34.3 x 13.3 cm  
(35.75" x 13.5" x 5.25")

**EXTERNAL DIMS:**

96.8 x 40.6 x 15.5 cm  
(38.12" x 16" x 6.12")

**LID/BOTTOM DEPTH:**

4.4 cm / 8.9 cm (1.75" / 3.5")

**WEIGHT:**

7.7 kg (16.98 lbs) WITH FOAM  
7.3 kg (16.09 lbs) NO FOAM



### 1740 CASE

**INTERNAL DIMS:**

104.1 x 32.8 x 30.8 cm  
(40.98" x 12.92" x 12.13")

**EXTERNAL DIMS:**

112.2 x 40.9 x 35.6 cm  
(44.16" x 16.09" x 14")

**LID/BOTTOM DEPTH:**

6.5 cm / 24.3 cm (2.56" / 9.57")

**WEIGHT:**

12.25 kg (27 lbs) WITH FOAM  
9.98 kg (22 lbs) NO FOAM



### 1770 CASE

**INTERNAL DIMS:**

138.6 x 39.6 x 21.9 cm  
(54.58" x 15.58" x 8.63")

**EXTERNAL DIMS:**

145.8 x 46.9 x 28.5 cm  
(57.42" x 18.48" x 11.23")

**LID/BOTTOM DEPTH:**

4.8 cm / 17.1 cm  
(1.88" / 6.75")

**WEIGHT:**

18.8 kg (41.49 lbs) WITH FOAM  
16.3 kg (36.01 lbs) NO FOAM



### 1720 CASE

Similarly sized Peli Storm Case: iM3200

**INTERNAL DIMS:**

106.2 x 34.5 x 13.5 cm  
(41.80" x 13.58" x 5.33")

**EXTERNAL DIMS:**

113 x 40.8 x 15.9 cm  
(44.48" x 16.07" x 6.25")

**LID/BOTTOM DEPTH:**

4.4 cm / 8.9 cm (1.75" / 3.5")

**WEIGHT:**

10.5 kg (23.10 lbs) WITH FOAM  
8.3 kg (18.25 lbs) NO FOAM



### 1750 CASE

Similarly sized Peli Storm Case: iM3300

**INTERNAL DIMS:**

128 x 33.9 x 13.5 cm  
(50.38" x 13.33" x 5.33")

**EXTERNAL DIMS:**

142.4 x 40.8 x 15.6 cm  
(56.06" x 16.05" x 6.13")

**LID/BOTTOM DEPTH:**

4.4 cm / 8.9 cm  
(1.75" / 3.5")

**WEIGHT:**

12.1 kg (26.70 lbs) WITH FOAM  
9.5 kg (21.00 lbs) NO FOAM



### 1780 CASE

**INTERNAL DIMS:**

104.4 x 54.7 x 37.8 cm  
(41.12" x 21.54" x 14.88")

**EXTERNAL DIMS:**

114 x 64.3 x 41.9 cm  
(44.9" x 25.32" x 16.5")

**LID/BOTTOM DEPTH:**

19.3 cm / 18.5 cm  
(7.58" / 7.3")

**WEIGHT:**

22.2 kg (49 lbs) WITH FOAM  
17.4 kg (38.4 lbs) NO FOAM



PELLI LONG CASES

Photo by Augustin de Valence - Honda Revival Team



## STUCK IN THE MUD?

During our trip across the Saharan Desert on our Africa Twin motorcycles, we went through a lot, traveling through sand, mud and water as well as over rock and asphalt. At one point, we attempted to cross a massive pool of mud that was blocking the road. The thinking was that going through at full speed would allow us to fly across the muddy area to the other side unscathed. Needless to say, that didn't happen. The bike was stuck for hours, but ultimately, we got it out. Later, we opened our Peli cases to find that the drone, sleeping bag, spare motor parts, food and clothes inside the cases remained perfectly dry and protected. There was never a doubt in our minds.

Honda Revival Team @hondarevivalteam

## SURVIVAL + STORIES

CASE CONTENTS NOT INCLUDED

\*Other colours and configurations available upon minimum quantities. Check with your Customer Service representative for further details.



# PELI CASE SPECIFICATIONS AND FEATURES

CAT. NO.	INTERIOR DIMENSIONS (cm)	EXTERIOR DIMENSIONS (cm)	LID DEPTH	BOTTOM DEPTH	WEIGHT WITH FOAM	WEIGHT WITHOUT FOAM	BUOYANCY MAXIMUM	
PERSONAL UTILITY CASE SERIES	R20	18 x 8.6 x 5	22.8 x 12.3 x 7.3	N/A	N/A	N/A	0.6 kg	0.7 kg
	R40	19.4 x 11.9 x 4.8	25 x 15.5 x 7.3	N/A	N/A	N/A	0.8 kg	1.1 kg
	R60	22.6 x 13.6 x 7.5	28.3 x 17.4 x 9.9	N/A	N/A	N/A	1.1 kg	2.2 kg
MICRO CASES	0915 0965	12.2 x 5.7 x 1.4	14.1 x 8.3 x 2.2	N/A	N/A	0.1 kg	N/A	N/A
	G5 RF Field Wallet	1.1 x 6.5 x 10.4	2 x 7.6 x 12.7	N/A	N/A	N/A	0.15 kg	N/A
	1010	11.1 x 7.3 x 4.3	14.9 x 10.3 x 5.4	1.8 cm	2.4 cm	0.19 kg	0.18 kg	0.23 kg
	1015	13.1 x 6.7 x 3.5	17 x 9.9 x 4.7	1.1 cm	2.4 cm	N/A	0.21 kg	0.54 kg
	1020	13.5 x 9 x 4.3	17.3 x 12.1 x 5.4	1.8 cm	2.4 cm	0.25 kg	0.25 kg	0.34 kg
	1030	16.2 x 6.7 x 5.2	19.1 x 9.8 x 6.2	1.8 cm	3.2 cm	0.28 kg	0.27 kg	0.45 kg
	1040	16.5 x 9.8 x 4.4	19.1 x 12.9 x 5.4	1.8 cm	2.4 cm	0.32 kg	0.32 kg	0.57 kg
	1050	16 x 9.3 x 7	20.3 x 12.9 x 7.9	1.8 cm	4.9 cm	0.38 kg	0.37 kg	0.79 kg
	1060	21 x 10.8 x 5.7	25.1 x 14.2 x 6.7	1.8 cm	3.7 cm	0.47 kg	0.45 kg	1.13 kg
SMALL CASES	1120	18.5 x 12.1 x 8.5	21.4 x 17.2 x 9.8	1.3 cm	6.5 cm	0.65 kg	0.61 kg	2.27 kg
	1150	21.1 x 14.7 x 9.5	24 x 19.8 x 10.9	1.9 cm	7.3 cm	0.79 kg	0.73 kg	3.63 kg
	1170	26.8 x 15.3 x 8	29.6 x 21.2 x 9.6	2.7 cm	5.3 cm	0.95 kg	0.89 kg	3.29 kg
	1200	23.5 x 18.1 x 10.5	27 x 24.6 x 12.4	3 cm	7.4 cm	1.3 kg	1.2 kg	5.45 kg
	1300	23.3 x 17.8 x 15.5	27 x 24.6 x 17.4	3 cm	12.5 cm	1.6 kg	1.4 kg	5.6 kg
	1400	30.1 x 22.8 x 13.1	34.7 x 29.5 x 14.6	3 cm	10.2 cm	2 kg	1.8 kg	9.1 kg
LAPTOP & TABLET CASES	1075	28.2 x 20.1 x 4.1	31.4 x 24.8 x 5.4	2.1 cm	2.1 cm	0.7 kg	0.6 kg	N/A
	1085	36.3 x 26.3 x 5	39.7 x 31.5 x 6.4	2.5 cm	2.5 cm	1.4 kg	1.2 kg	N/A
	1095	40.1 x 28.3 x 5.2	43.6 x 33.6 x 6.6	2.6 cm	2.6 cm	1.6 kg	1.4 kg	N/A
	1095CC	40.1 x 28.3 x 5.2	43.6 x 33.6 x 6.6	2.6 cm	2.6 cm	1.5 kg	N/A	N/A
	1470	39.9 x 27.2 x 9.8	42.9 x 33.6 x 11.4	3.7 cm	6.1 cm	2.5 kg	1.94 kg	11.3 kg
	1490	45.1 x 28.9 x 10.5	50.5 x 35.4 x 11.9	3.8 cm	6.7 cm	2.95 kg	2.48 kg	18.6 kg
	1490CC1	45.1 x 28.9 x 10.5	50.5 x 35.4 x 11.9	3.8 cm	6.7 cm	2.9 kg	2.5 kg	18.6 kg
	1495	47.9 x 33.3 x 9.7	54.9 x 43.8 x 12.4	2.8 cm	6.8 cm	3.8 kg	3.28 kg	20.5 kg
	1495CC1	47.9 x 33.3 x 9.7	54.9 x 43.8 x 12.4	2.8 cm	6.8 cm	5 kg	N/A	20.5 kg
	1430	34.4 x 14.6 x 29.7	41.7 x 22.1 x 33.4	5.1 cm	24.6 cm	2.95 kg	2.54 kg	26.8 kg
	1440	43.4 x 19.1 x 40.6	50 x 30.5 x 45.7	5.1 cm	35.6 cm	7.48 kg	6.58 kg	43.2 kg
MEDIUM CASES	1450	37.4 x 26 x 15.4	40.9 x 33.1 x 17.5	4.4 cm	11.1 cm	2.9 kg	2.5 kg	13.61 kg
	1460	47.1 x 25.2 x 27.7	53 x 32.3 x 32.4	12.5 cm	15.3 cm	5.66 kg	3.97 kg	37.19 kg
	1500	42.8 x 28.6 x 15.5	47.1 x 35.7 x 17.5	4.6 cm	10.9 cm	3.2 kg	2.9 kg	22.68 kg
	1510	50.2 x 27.9 x 19.3	55.9 x 35.1 x 22.9	4.5 cm	14.7 cm	6.17 kg <sup>A</sup>	5.44 kg	29.1 kg
	1510M	50.2 x 27.9 x 19.3	59.8 x 36.5 x 27	4.5 cm	14.7 cm	8.1 kg	7.39 kg	N/A
	1520	44.9 x 31.8 x 17.1	49.9 x 39.3 x 19.1	4.5 cm	12.5 cm	4.24 kg	3.76 kg	28.6 kg
	1550	47.3 x 36 x 19.6	52.5 x 43.5 x 21.6	4.4 cm	14.9 cm	5.4 kg	4.8 kg	31.7 kg

<sup>A</sup>Weight with Hybrid interior: 6.77 kg (14.94 lbs)



TEMPERATURE RANGE (Min/Max)	CERTIFICATES	FEATURES								COLOURS	CAT. NO.	
		HYBRID INTERIOR	TREKPAK™	PADDED DIVIDERS	RUBBERISED HANDLES	PANEL FRAMES	PERSONALISED NAMEPLATE	LID ORGANISER	WHEELS			
-23 / 93 ° C	IP68										R20	PERSONAL UTILITY CASE SERIES
-23 / 93° C	IP68										R40	
-23 / 93° C	IP68										R60	
N/A	-										0915 0965	MICRO CASES
N/A	IP67										G5 RF Field Wallet	
-23 / 93 ° C	IP67										1010	
N/A	IP67										1015	
-23 / 93 ° C	IP67										1020	
-23 / 93 ° C	IP67										1030	
-23 / 93 ° C	IP67										1040	
-23 / 93 ° C	IP67										1050	
-23 / 93 ° C	IP67										1060	
-40 / 99 ° C	IP67 • DEF STAN 81-41/STANAG 4280					0					1120	
-40 / 99 ° C	IP67 • DEF STAN 81-41/STANAG 4280					0					1150	
-40 / 99 ° C	IP67										1170	
-40 / 99 ° C	IP67 • DEF STAN 81-41/STANAG 4280					0					1200	
-40 / 99 ° C	IP67 • DEF STAN 81-41/STANAG 4280					0					1300	
-40 / 99 ° C	IP67 • MIL C-4150J • DEF STAN 81-41/STANAG 4280 • ATA 300					0	0				1400	LAPTOP & TABLET CASES
-23 / 49 ° C											1075	
-23 / 49 ° C											1085	
-23 / 49 ° C											1095	
-23 / 49 ° C											1095CC	
-40 / 99 ° C	MIL C-4150J					S	O	O			1470	
-40 / 99 ° C	DEF STAN 81-41/STANAG 4280					S	O	O	O		1490	
-40 / 99 ° C	DEF STAN 81-41/STANAG 4280					S	O	O	S		1490CC1	
-40 / 99 ° C	IP67 • DEF STAN 81-41/STANAG 4280					S	O				1495	
-40 / 99 ° C	IP67 • DEF STAN 81-41/STANAG 4280					S	O	S			1495CC1	
-40 / 99 ° C	IP67 • DEF STAN 81-41/STANAG 4280					O	S	O	O		1430	
-40 / 99 ° C	IP67 • DEF STAN 81-41/STANAG 4280					O	S	O	O		1440	
-40 / 99 ° C	IP67 • MIL C-4150J • DEF STAN 81-41/STANAG 4280					O	S	O	O		1450	MEDIUM CASES
-40 / 99 ° C	IP67					S					1460	
-40 / 99 ° C	IP67 • MIL C-4150J • DEF STAN 81-41/STANAG 4280 • ATA 300					O	S	O	O		1500	
-40 / 99 ° C	IP67 • DEF STAN 81-41/STANAG 4280	0	0	0	S		O	O	S		1510	
-40 / 99 ° C	IP57					O	S	O	O		1510M	
-40 / 99 ° C	IP67 • MIL C-4150J • DEF STAN 81-41/STANAG 4280					O	S	O	O		1520	
-40 / 99 ° C	IP67 • MIL C-4150J • DEF STAN 81-41/STANAG 4280 • ATA 300	0	0	S	O	O					1550	

PELI CASES SPECIFICATIONS | FEATURES

\* Other colours and configurations available upon minimum quantities. Check with your Customer Service representative for further details.



# PELI CASE SPECIFICATIONS AND FEATURES

CAT. NO.	INTERIOR DIMENSIONS (cm)	EXTERIOR DIMENSIONS (cm)	LID DEPTH	BOTTOM DEPTH	WEIGHT WITH FOAM	WEIGHT WITHOUT FOAM	BUOYANCY MAXIMUM	
LARGE CASES	1560	50.6 x 38 x 22.9	56 x 45.5 x 26.5	5.1 cm	17.8 cm	9.1 kg	7.7 kg	52.16 kg
	1560M	50.6 x 38 x 22.9	60.4 x 46.6 x 30.7	5.1 cm	17.8 cm	11 kg	9.66 kg	N/A
	1600	54.6 x 42 x 20.2	61.8 x 49.4 x 22.2	4.4 cm	15.5 cm	6.4 kg	5.9 kg	53.07 kg
	1610	55.1 x 42.2 x 26.8	62.8 x 49.7 x 30.3	5.2 cm	21.6 cm	10.2 kg	9.07 kg	54.4 kg
	1610M	55.3 x 42.4 x 27	66.5 x 58.4 x 34.7	5.2 cm	21.8 cm	13.2 kg	11.93 kg	N/A
	1620	54.3 x 41.4 x 31.9	63 x 49.2 x 35.2	5.2 cm	26.7 cm	11.8 kg	11.1 kg	68 kg
	1620M	54.6 x 41.7 x 31.9	66.5 x 58.4 x 39.6	5.1 cm	26.7 cm	14.3 kg	12.7 kg	N/A
	1630	70.4 x 53.3 x 39.4	79.5 x 61.5 x 44.4	8.3 cm	30.8 cm	16.33 kg	14.06 kg	159 kg
	1640	60.2 x 61 x 35.3	69.1 x 69.9 x 41.4	5.1 cm	30.2 cm	17.24 kg	15.42 kg	166 kg
	1650	72.2 x 44.2 x 27	80.1 x 52.1 x 31.7	4.6 cm	22.5 cm	12.73 kg	10.9 kg	82.1 kg
	1660	71.6 x 50.2 x 44.8	80 x 58.1 x 48.3	8.9 cm	35.9 cm	19.1 kg	15.5 kg	159 kg
	1670	71.4 x 41.9 x 23.3	78.8 x 49.3 x 28.4	4.6 cm	18.8 cm	11.8 kg	10.4 kg	82.6 kg
	1690	76.5 x 63.8 x 39	84.9 x 72.1 x 44.8	7.3 cm	30.8 cm	19.5 kg	15.42 kg	186 kg
	1730	86.4 x 61 x 31.8 cm	95.3 x 68.9 x 36.5	6.4 cm	25.4 cm	17.24 kg	13.61 kg	189 kg
	1780	104.4 x 54.7 x 37.8	114 x 64.3 x 41.9	19.3 cm	18.5 cm	22.20 kg	17.42 kg	226.8 kg
	0340	45.7 x 45.7 x 45.7	52.1 x 52.1 x 48.9	11.4 cm	34.3 cm	13.5 kg	10.89 kg	100 kg
	0350	50.8 x 50.8 x 50.8	57.2 x 57 x 54	12.7 cm	38.1 cm	14.52 kg	11.79 kg	122 kg
	0370	61 x 61 x 61	67.3 x 67.3 x 64.1	12.7 cm	48.3 cm	18.6 kg	14.5 kg	211 kg
	0450	Varies by drawer configuration	60.8 x 37.5 x 45.6	N/A	N/A	21.95 kg	N/A	N/A
	0500	88.8 x 46.9 x 64.1	101.5 x 59.6 x 72.8	5.7 cm	58.4 cm	26.58 kg	22.68 kg	354 kg
0550	120.8 x 61.1 x 44.9	129.7 x 70 x 57.9	8.1 cm	36.8 cm	43.09 kg	35.92 kg	371.95 kg	
LONG CASES	1700	90.8 x 34.3 x 13.3	96.8 x 40.6 x 15.5	4.4 cm	8.9 cm	7.7 kg	7.3 kg	62.1 kg
	1720	106.2 x 34.5 x 13.5	113 x 40.8 x 15.9	4.4 cm	8.9 cm	10.5 kg	8.3 kg	73 kg
	1740	104.1 x 32.8 x 30.8	112.2 x 40.9 x 35.6	6.5 cm	24.3 cm	12.25 kg	9.98 kg	121.11 kg
	1750	128 x 33.9 x 13.5	142.4 x 40.8 x 15.6	4.4 cm	8.9 cm	12.1 kg	9.5 kg	85 kg
	1770	138.6 x 39.6 x 21.9	145.8 x 46.9 x 28.5	4.8 cm	17.1 cm	18.8 kg	16.3 kg	127.01 kg
	1780	104.4 x 54.7 x 37.8	114 x 64.3 x 41.9	19.3 cm	18.5 cm	22.20 kg	17.4 kg	226.8 kg

PELI CASES SPECIFICATIONS | FEATURES | ACCESSORIES

PROTECTOR CASE™  
COLOURS AVAILABLE



## CASE ACCESSORIES



Check how to install all accessories through our easy step-by-step Tutorial videos



Lid Organisers



Replacement Foam



TrekPak™ Dividers



Padded Dividers



Yellow Padded Dividers



EZ-Click Molle Panel



Shoulder Straps



TEMPERATURE RANGE (Min/Max)	CERTIFICATES	FEATURES							COLOURS	CAT. NO.
		HYBRID INTERIOR	TREKPAK™	PADDED DIVIDERS	RUBBERISED HANDLES	PANEL FRAMES	PERSONALISED NAMEPLATE	LID ORGANISER		
-40 / 99° C	IP67 • DEF STAN 81-41/STANAG 4280	0	0	S		0	0	S	■ ■ ■ ■ *	1560
-40 / 99° C	IP57			S		0	0	S	■	1560M
-40 / 99° C	IP67 • MIL C-4150J • DEF STAN 81-41/STANAG 4280 • ATA 300	0	0	S		0	0		■ ■ ■ ■ *	1600
-40 / 99° C	IP67 • DEF STAN 81-41/STANAG 4280	0	0	S		0	0	S	■*	1610
-40 / 99° C	IP57			S		0	0	S	■	1610M
-40 / 99° C	IP67 • MIL C-4150J • DEF STAN 81-41/STANAG 4280			S		0	0	S	■*	1620
-40 / 99° C	IP57			S		0	0	S	■	1620M
-40 / 99° C	IP67 • DEF STAN 81-41/STANAG 4280 • ATA 300 • MIL C-4150J					0	0	S	■*	1630
-40 / 99° C	IP67 • DEF STAN 81-41/STANAG 4280		0			0	0	S	■	1640
-40 / 99° C	IP67 • MIL C-4150J • DEF STAN 81-41/STANAG 4280 • ATA 300	0	0	S		0	0	S	■*	1650
-23.3 / 99° C	IP67 • DEF STAN 81-41/STANAG 4280		0			0	0	S	■*	1660
-40 / 99° C	-							S	■	1670
-40 / 99° C	IP67 • DEF STAN 81-41/STANAG 4280		0			0	0	S	■*	1690
-40 / 99° C	IP67					0		S	■*	1730
-40 / 99° C	DEF STAN 81-41/STANAG 4280					0		S	■*	1780
-40 / 99° C	IP67 • DEF STAN 81-41 /STANAG 4280		0			0	0		■	0340
-40 / 99° C	IP67 • DEF STAN 81-41 /STANAG 4280		0			0	0	0	■	0350
-40 / 99° C	IP67 • DEF STAN 81-41 /STANAG 4280		0			0	0	0	■*	0370
N/A	-							S	■	0450
-40 / 99° C	-					0	0		■	0500
-40 / 99° C	IP57					0	0		■	0550
-40 / 99° C	IP67 • MIL C-4150J • DEF STAN 81-41/STANAG 4280							S	■*	1700
-40 / 99° C	DEF STAN 81-41/STANAG 4280					0		S	■*	1720
-40 / 99° C	IP66					0		S	■*	1740
-40 / 99° C	IP67 • DEF STAN 81-41/STANAG 4280					0		S	■*	1750
N/A	-							S	■	1770
-40 / 99° C	DEF STAN 81-41/STANAG 4280					0		S	■*	1780

LARGE CASES

LONG CASES

PELI CASES SPECIFICATIONS | FEATURES | ACCESSORIES

S = Standard feature  
O = Optional accessory

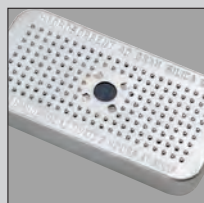
\*Other colours and configurations available upon minimum quantities.  
Check with your Customer Service representative for further details.

From custom nameplates and padded shoulder straps, to TSA Locks and humidity indicators, Peli™ offers a broad range of case accessories.

Refer to [www.peli.com](http://www.peli.com) for specific accessories available for each case model



TSA Lock



Peli Desiccant (Silica Gel)



Nameplates



Card Holder



Caster Wheel Kit



Pallet Riser



Lid Stays



# LEARN MORE ABOUT + OUR PRODUCTS



[www.peli.com](http://www.peli.com)



AVAILABLE IN 18 LANGUAGES!

[www.pelicatalogue.com](http://www.pelicatalogue.com)



[www.peli.com/webinars](http://www.peli.com/webinars)



## EMEA / [www.peli.com](http://www.peli.com)

**EUROPE, MIDDLE EAST & AFRICA HEADQUARTERS**  
**PELI PRODUCTS, S.L.U.**  
 C/ Provença, 388 Planta 7  
 08025 • Barcelona, Spain  
 Tel +34 934 674 999

**FRANCE**  
**PELI PRODUCTS FRANCE S.A.S.**  
 20/22 Rue des Petits Hôtels  
 75010 Paris, France  
 Tel +33 (0)1 44 83 95 63

**UK**  
**PELI HARDIGG UK**  
 Unit 4, Brookfield Industrial Estate  
 Leacon Road  
 Ashford Kent TN23 4TU  
 Tel + 44 (0) 1233 895 895

**GERMANY**  
**PELI PRODUCTS GERMANY GmbH**  
 Neudorfer Strasse 285 C  
 09474 Crottendorf  
 Germany  
 Tel +49 (0) 211 882 42 401

**DENMARK**  
**PELI PRODUCTS DENMARK APS**  
 Midtermolen 1, 2. tv.  
 2100 Copenhagen, Denmark  
 Tel: +34 934 674 999

**NETHERLANDS**  
**PELI PRODUCTS NETHERLANDS B.V.**  
 Basisweg, 10  
 1043AP Amsterdam,  
 The Netherlands  
 Tel +34 934 674 999

**ITALY**  
**PELI PRODUCTS ITALY S.R.L.**  
 Viale Monte Nero, 84  
 20135 Milano, Italy  
 Tel +34 934 674 999

**POLAND**  
**PELI PRODUCTS POLAND SP. Z O.O.**  
 ul. Stary Rynek 38-39  
 61-772 Poznan, Poland  
 Tel +34 934 674 999

**UAE**  
**PELICAN PRODUCTS FZE**  
 JAFZA One Building A  
 office 1511/1512  
 Jebel Ali Free Zone gate 5  
 P.O.Box 261008  
 Dubai – United Arab Emirates  
 Tel +971 4 8876550

**INDIA**  
**PELICAN PRODUCTS AND SERVICES INDIA PVT. LTD**  
 Level "4", Augusta Point,  
 Sector-53,  
 Golf Course Road,  
 Gurgaon 122002 Haryana, India  
 Tel +91 124 4354148

## U.S.A.

**U.S.A. & GLOBAL HEADQUARTERS**  
 23215 Early Avenue  
 Torrance, CA 90505 USA  
 Tel 310.326.4700  
 800.473.5422 (Outside CA)

\* We also have offices in Canada, Japan, China, Australia and South Korea

### INJECTION MOULDED CASES - PELI LIMITED LIFETIME\* GUARANTEE

Peli Products, S.L.U. ("Peli") guarantees its injection moulded products for a lifetime\* against breakage or defects in workmanship. Peli™ injection molded cases are guaranteed to be watertight to a depth of 3.3 feet (1 meter) for 30 minutes (IP 67) if properly closed with undamaged o-ring in place unless otherwise stated. To the extent permitted by law, Peli's liability is limited to the case and not its contents or foam. All warranty claims of any nature are barred if the case has been altered, damaged or in any way physically changed, or subjected to abuse, misuse, negligence or accident.

For complete warranty details, see [www.peli.com/guarantee](http://www.peli.com/guarantee)

\* Lifetime Guarantee not applicable where prohibited by law.

### Distributed by:

Follow us on:



©2022 Peli Products, S.L.U. All trademarks are registered and/or unregistered trademarks of Peli Products, S.L.U., its parent, subsidiaries and/or affiliates. All details included in this catalogue are correct when printed but for most updated information please visit [www.peli.com](http://www.peli.com) and [www.pelicatalogue.com](http://www.pelicatalogue.com).  
 Part No. 0030-000-101E OCT 22

### PELInsights



Check out our latest posts on Peli Cases, get to know our Pro Users and take part in our different programs.

This and more on the brand new PELI blog!



### Watch the Peli cases video!

#### FEATURES



MIL C-4150J  
 STAN AG-4280  
 DEF STAN 33-41  
 ATA COMPLIANCE

