



Vonk B.V.  
Voorstraat 41  
3265 BT PIERSHIL

Tel. +31-(0)88-0330300  
info@vonkbv.com  
www.vonkbv.com

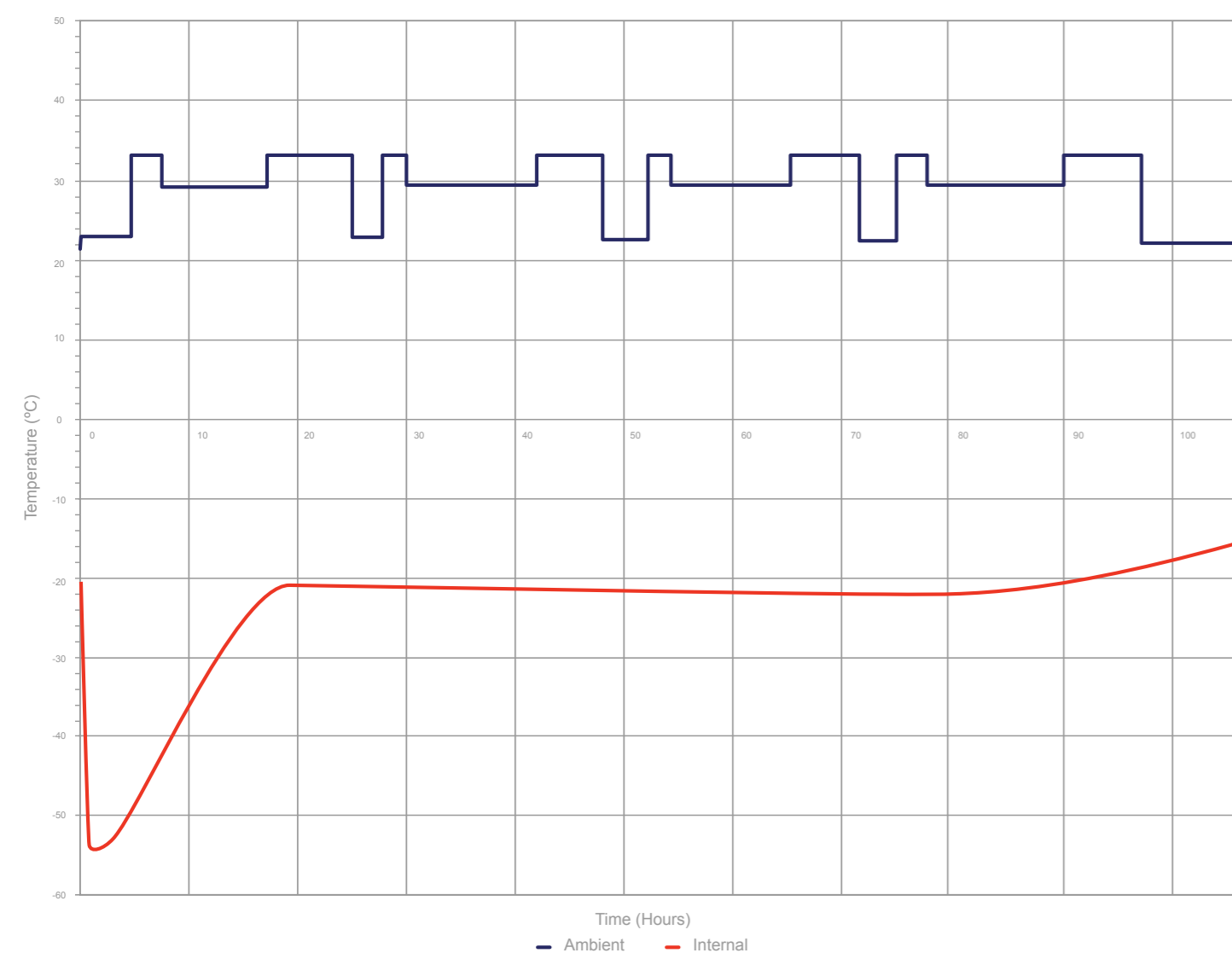
## CRÈDO CUBE™ SERIES 20M PRODUCT SPECIFICATION

### CRÈDO™ SERIES 20M -25°C TO -15°C

| Payload Size | Exterior Dimensions - mm | Interior Dimensions - mm | Insulation      | Outer Material | Tare Weight - kg |
|--------------|--------------------------|--------------------------|-----------------|----------------|------------------|
| 3L           | 318 x 267 x 279          | 130 x 130 x 130          | Single Wall VIP | White Plastic  | 7                |
| 4L           | 318 x 267 x 279          | 150 x 150 x 150          | Single Wall VIP | White Plastic  | 6                |
| 4L           | 381 x 343 x 349          | 150 x 150 x 150          | Nested VIP      | White Plastic  | 10               |
| 8L           | 445 x 286 x 292          | 282 x 165 x 165          | Single Wall VIP | White Plastic  | 9                |
| 10L          | 381 x 343 x 349          | 216 x 216 x 216          | Single Wall VIP | White Plastic  | 14               |
| 12L          | 381 x 343 x 349          | 226 x 226 x 226          | Single Wall VIP | White Plastic  | 12               |
| 12L          | 457 x 419 x 432          | 226 x 226 x 226          | Nested VIP      | White Plastic  | 19               |
| 16L          | 419 x 375 x 381          | 254 x 254 x 254          | Single Wall VIP | White Plastic  | 14               |
| 16L          | 464 x 432 x 445          | 254 x 254 x 254          | Nested VIP      | White Plastic  | 20               |
| 28L          | 457 x 419 x 432          | 305 x 305 x 305          | Single Wall VIP | White Plastic  | 20               |
| 28L          | 540 x 495 x 502          | 305 x 305 x 305          | Nested VIP      | Kraft Box      | 30               |
| 56L          | 540 x 495 x 502          | 381 x 381 x 381          | Single Wall VIP | Kraft Box      | 30               |
| 56L          | 673 x 673 x 641          | 381 x 381 x 381          | Nested VIP      | Duracube HD    | 53               |
| 96L          | 673 x 673 x 641          | 457 x 457 x 457          | Single Wall VIP | Duracube HD    | 54               |

Internal / external dimensions may vary subject to approved tolerances.

Series 20M 2896 ISTA Summer Thermal Performance

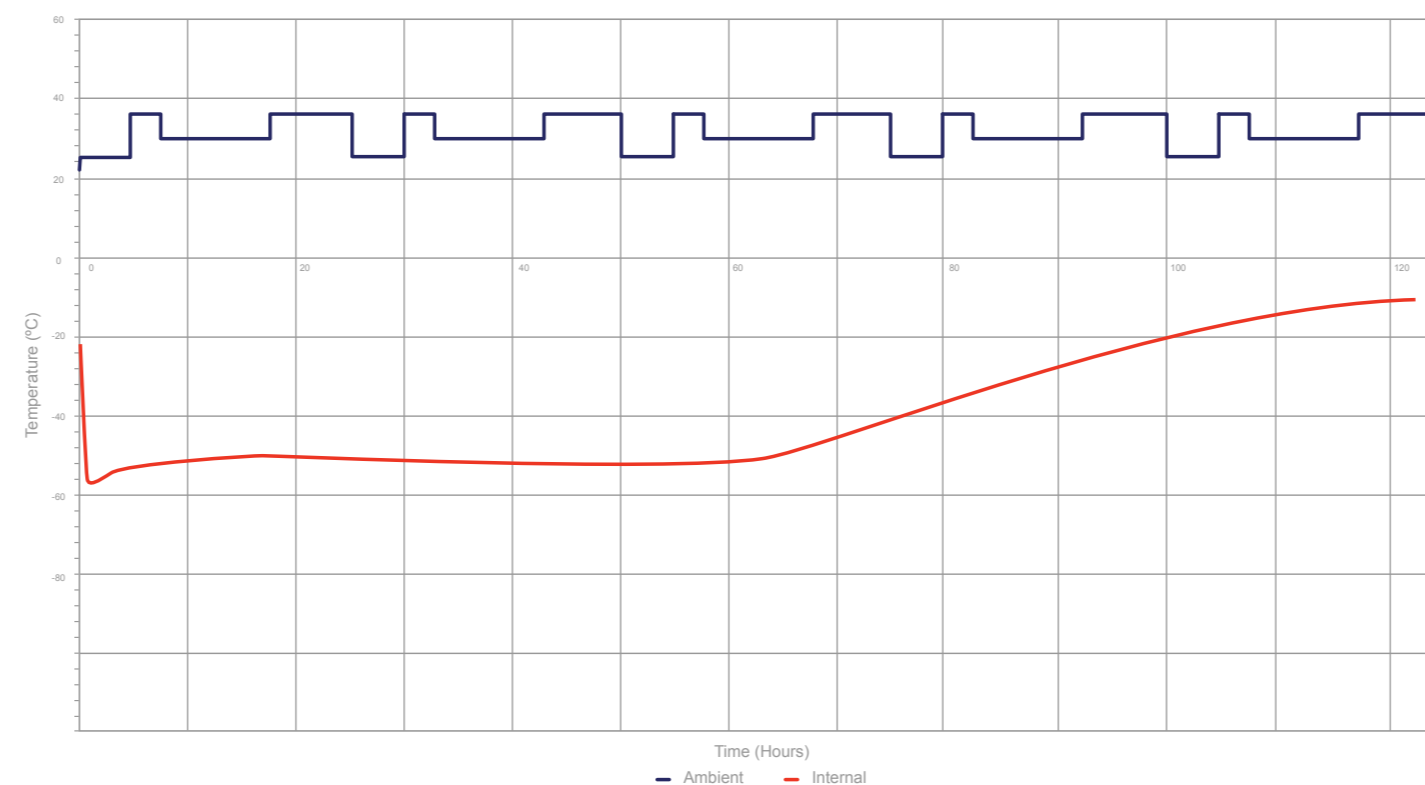


## CRÈDO CUBE™ SERIES 50M (-40°C AND COOLER) PRODUCT SPECIFICATION

| Payload Size | Exterior Dimensions - mm | Interior Dimensions - mm | Insulation      | Outer Material | Tare Weight - kg |
|--------------|--------------------------|--------------------------|-----------------|----------------|------------------|
| 4L           | 381 x 343 x 349          | 150 x 150 x 150          | Nested VIP      | White Plastic  | 10               |
| 12L          | 457 x 419 x 432          | 226 x 226 x 226          | Nested VIP      | White Plastic  | 19               |
| 16L          | 464 x 432 x 445          | 254 x 254 x 254          | Nested VIP      | White Plastic  | 20               |
| 28L          | 540 x 495 x 502          | 305 x 305 x 305          | Nested VIP      | Kraft Box      | 30               |
| 56L          | 673 x 673 x 641          | 381 x 381 x 381          | Nested VIP      | Duracube       | 54               |
| 96L          | 673 x 673 x 641          | 457 x 457 x 457          | Single Wall VIP | Duracube HD    | 56               |

Internal / external dimensions may vary subject to approved tolerances.

Series 50M - 2896, ISTA Summer Thermal Performance



**Superior Performance**  
ensuring complete  
product integrity

**Small and Light**  
significantly reducing  
distribution costs

**Crêdo ProEnvision™ and  
Service Centers**  
support reclamation  
and re-use

FOR MORE INFORMATION ABOUT PELI BIOTHERMAL PRODUCTS, PLEASE CONTACT:

Vonk B.V. - Distributor for Military and Hospital market.



Vonk B.V.  
Voorstraat 41  
3265 BT PIERSHIL

Tel. +31-(0)88-0330300  
info@vonkbv.com  
www.vonkbv.com

ISO17025, ISO9001-2008 Accredited

Golden Hour™, TIC™, Crêdo™, Crêdo Cube™, Crêdo ProEnvision™, Crêdo Xtreme™, Crêdo DURACUBE™, Crêdo ProMed™, Sherpa™ Systems, CoolGuard™ PCM, CoolGuard™ Advance, CoolPall™ Flex and CoolPall™ Vertos are registered trademarks of Pelican Products, Inc., its subsidiaries and/or affiliates.



©2019 PELI BioThermal all rights reserved.



## CRÈDO CUBE™ SERIES 4, 22, 20M & 50M

Superior thermal protection in a convenient mid-size container.

The Crêdo Cube™ is a passive and reusable shipper qualified to hold chilled medical materials at a safe temperature for up to five days. This system is ideal for reducing shipping costs or for circumstances in which unexpected delays may occur.

Modular TIC™ (Thermal Isolation Chamber) walls with integrated PCM (Phase-Change Material) and VIPs (Vacuum Insulated Panels) makes conditioning in a freezer for year-round shipping easy and allows effortless packing and storage.

### WHY CHOOSE CRÈDO™ SYSTEMS?

- The most trusted and reliable brand of high-performance reusable shippers with the largest number of sizes and temperature ranges available
- TIC™ walls contain PCM and completely enclose the temperature-sensitive payload ensuring consistently stable performance
- Crêdo™ shippers are highly durable, lightweight, and provide an optimum volume ratio of interior payload space for your products - allowing you to ship more product in fewer containers, reducing distribution costs



### ENHANCE YOUR CRÈDO™ SYSTEMS

- Crêdo ProEnvision™:** Easy-to-use, secure, web-based asset tracking software and global service centers available to assist customers and maximise their return on investment
- TIC™ Smart Indicator:** Optional temperature-sensitive label installation specifying an "at a glance" safe temperature reading

### CRÈDO CUBE™

**DURATION**  
96 - 168 Hours

**SERIES 4**  
(2°C to 8°C)

**VOLUME**  
3L, 4L, 8L, 10L, 12L, 16L,  
28L, 42L, 56L, 96L

**SERIES 22 CONTROLLED**  
(15°C to 25°C)

**VOLUME**  
3L, 4L, 8L, 10L, 12L, 16L,  
28L, 42L, 56L, 96L

**SERIES 22 UNIVERSAL**  
(15°C to 25°C)

**VOLUME**  
9L, 24L, 49L

**SERIES 20M**  
(-25°C to -15°C)

**VOLUME**  
3L, 4L, 8L, 10L, 12L, 16L,  
28L, 56L, 96L

**SERIES 50M**  
(-40°C and Cooler)

**VOLUME**  
4L, 12L, 16L, 28L,  
56L, 96L